

**STUDENT ASSESSMENTS
AND ASSOCIATED GROWTH MODELS FOR
TEACHER AND PRINCIPAL EVALUATION**

PUBLICLY AVAILABLE SERVICES SUMMARY

distributed through other means for all applications that are approved in conjunction with this RFQ to allow districts and BOCES to understand proposed offerings in advance of directly contacting Assessment Providers regarding potential further procurements.

Assessment Provider Information	
Name of Assessment Provider:	Questar III BOCES
Assessment Provider Contact Information:	7 H U U \ % R U G H O O
Name of Assessment:	STUDENT LEARNING OBJECTIVE ASSESSMENTS
Nature of Assessment:	<input type="checkbox"/> ASSESSMENT FOR USE WITH STUDENT LEARNING OBJECTIVES WITH A TARGET SETTING MODEL; OR <input type="checkbox"/> SUPPLEMENTAL ASSESSMENT WITH AN ASSOCIATED GROWTH MODEL: <input type="checkbox"/> GAIN SCORE MODEL <input type="checkbox"/> GROWTH-TO-PROFICIENCY MODEL <input type="checkbox"/> STUDENT GROWTH PERCENTILES <input type="checkbox"/> PROJECTION MODELS <input type="checkbox"/> VALUE-ADDED MODELS <input type="checkbox"/> O

applicable to ELA and math assessments):

the Core Grant. It was determined that both the ELA and Mathematics SLO assessments are high quality based on the Achieve The Core Assessment Evaluation Tool. The texts used within the ELA assessments are placed within the grade level band assessed. All texts are engaging, and are of published quality. The ELA assessments are both text and standards based and require students to read closely, find the answers within the text, and use textual evidence to support responses, students are also required to write from sources. The ELA assessments assess tier 2 words in context, and focus on central ideas in the text. The ELA assessments provide a variety of item types. Test blueprints are available for all Questar SLO assessments. Quantitative and Qualitative analysis data is available for all ELA assessments.

For assessments in Mathematics, The vast majority of points in each grade K. 8 are devoted to the Major Work of the grade. All topics are grade level appropriate, and show grade by grade progressions. Assessment blueprints are provided for all Questar III SLO Assessments. There is a direct connection between the

**STUDENT ASSESSMENTS
AND ASSOCIATED GROWTH MODELS FOR
TEACHER AND PRINCIPAL EVALUATION**

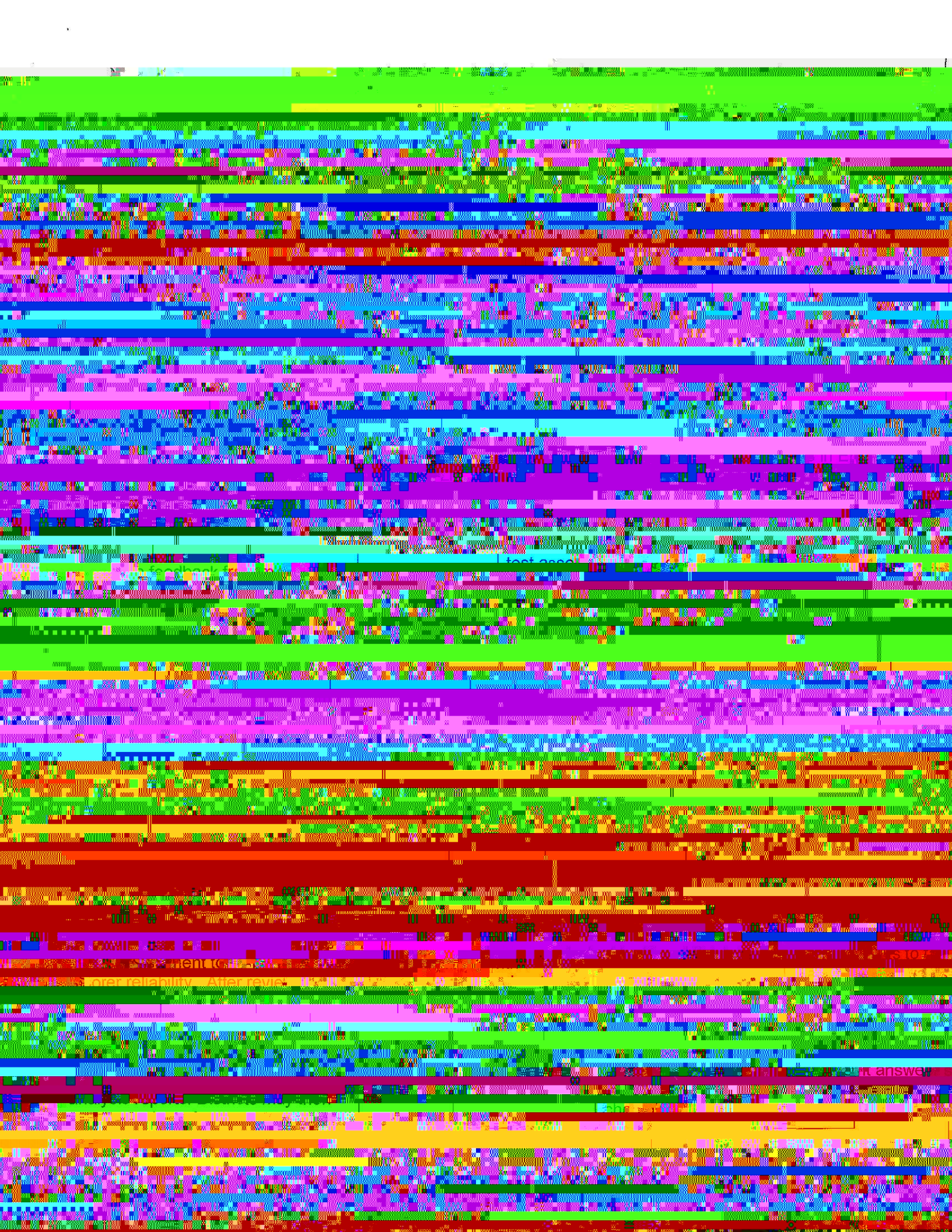
PUBLICLY AVAILABLE SERVICES

This form is to be completed by the assessment provider and submitted to the Department of Education. It is to be distributed through other means for all applications that are approved in conjunction with the RFQ to allow districts and BOCES to understand proposed offerings in advance. For more information, contact Assessment Providers regarding potential future offerings.

Assessment Provider Information	
Name of Assessment Provider	ERRY BORAELI
Assessment Provider Contact Information:	
Name of Assessment	STUDENT LEARNING OBJECTIVE ASSESSMENTS
Nature of Assessment	LEARNING OBJECTIVES WITH A TARGET SETTING MODEL - OER
Associated Growth Models	<input type="checkbox"/> GAIN SCORING MODEL <input type="checkbox"/> GROWTH-TO-PROFICIENCY MODEL <input type="checkbox"/> STUDENT GROWTH PERCENTILES <input type="checkbox"/> PROJECTION MODELS <input type="checkbox"/> VALUE ADDED MODELS <input type="checkbox"/> OTHER
Who can use the assessment to generate a 0-20 APPR score?	
What are the subjects/areas of study in which the assessment is used to generate a 0-20 APPR score?	English, Social Studies, Language Arts, Mathematics, Science, and Reading
What are the technology requirements associated with the assessment?	Technology used is the same as used to administer the assessments.
Is the assessment available, either for free or through purchase, to other districts or BOCES in New York State?	YES

Please provide the following information:

- A description of the assessment;
- A description of the associated growth models;
- A description of how scores are applied to APPR.



The classroom teacher will use the Questar III BOCES SLO Assessment as a tool to determine each student an individual, differentiated target, that is based on the student's performance. Students will either meet or not meet their individual target based on the number of students who met the target divided by the number of students who did not meet the target and multiplied by 100. The HEDI score is the percentage of students who met the target.

New York State Next Generation Assessment

Please use with SLOs addresses each characteristic

Characteristics

Math Assessments (only applicable to ELA and math assessments)

and Mathematics were thoroughly reviewed through the

assessments are high quality based on the Achievement Core BOCES SLO assessments are aligned with the Learning Standards. The texts used within the ELA assessments are placed within the grade level being assessed. The texts used throughout the assessments are engaging, and are of published quality. The ELA assessments are both text and standards based and

require students to read the text, and use textual evidence to support responses. Students are also required to write. ELA assessments assess 2-3 topics in each grade and focus on central ideas in the text. The ELA assessments provide a variety of item types. Test blueprints are available for all Questar III BOCES SLO assessments. Quantitative and Qualitative data are available for all ELA assessments.

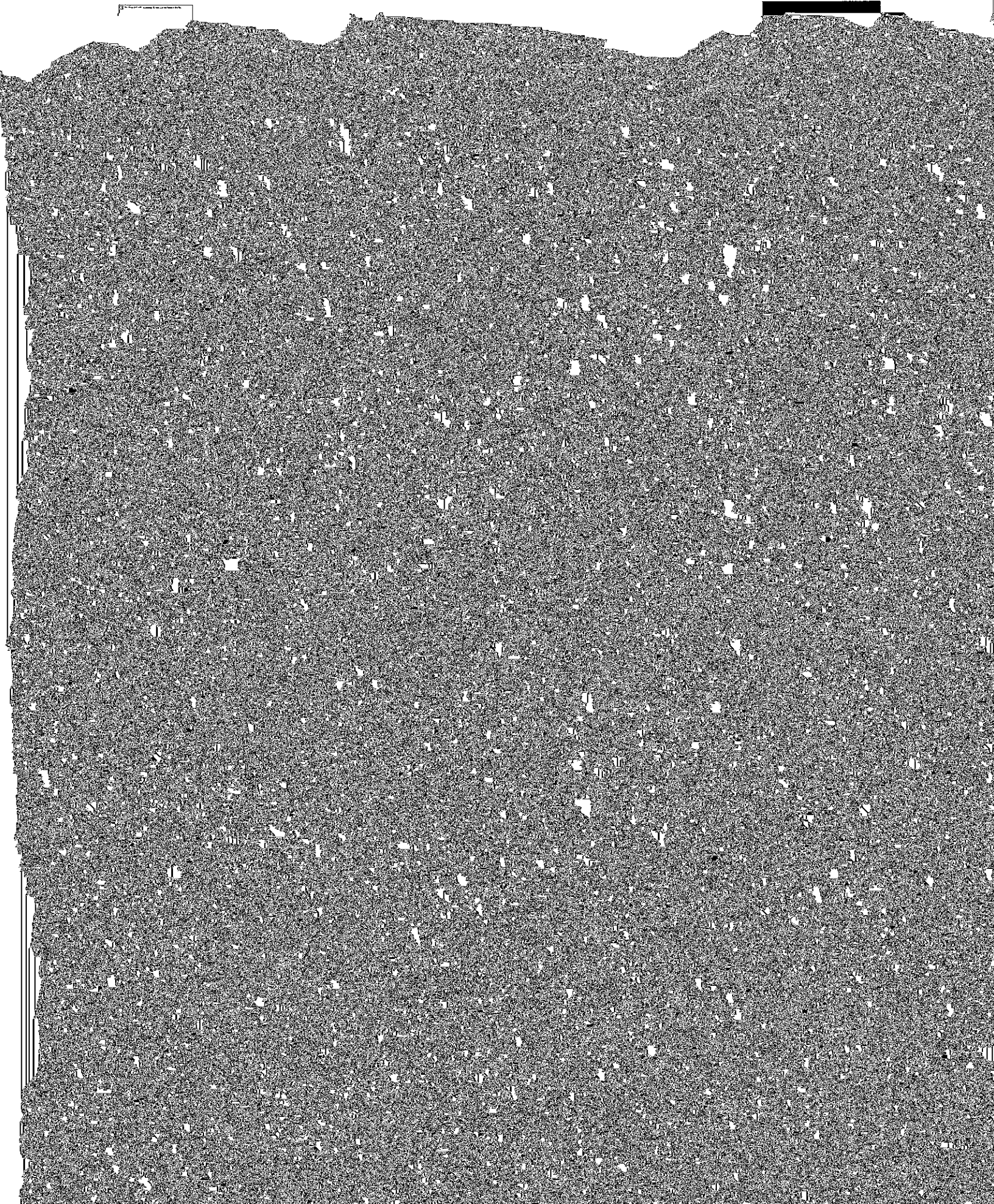
For assessments in mathematics, the items on the assessments are devoted to mathematics standards for each grade. Topics are grades to be applied. Test blueprints are provided for all Questar III SLO

Assessments. There is a separate standards assessment for each standards assessment. The mathematics assessments are a tool to assess student understanding, procedural skill and fluency, and applications. Test items show evidence of the degree to which a student can independently demonstrate the targeted New York State Next Generation Learning Standard.

Assessments Woven Tightly Into

The Questar III BOCES SLO assessments were created

administered in conjunction with the regular curriculum materials to support



To be completed by the Copyright Owner/Assessment Representative of the assessment being proposed and, where necessary, the co-applicant LEA:

Questar III BOCES

1 Name of Organization (PLEASE PRINT/TYPE)

Gladys Cruz
4 Signature of Authorized Representative